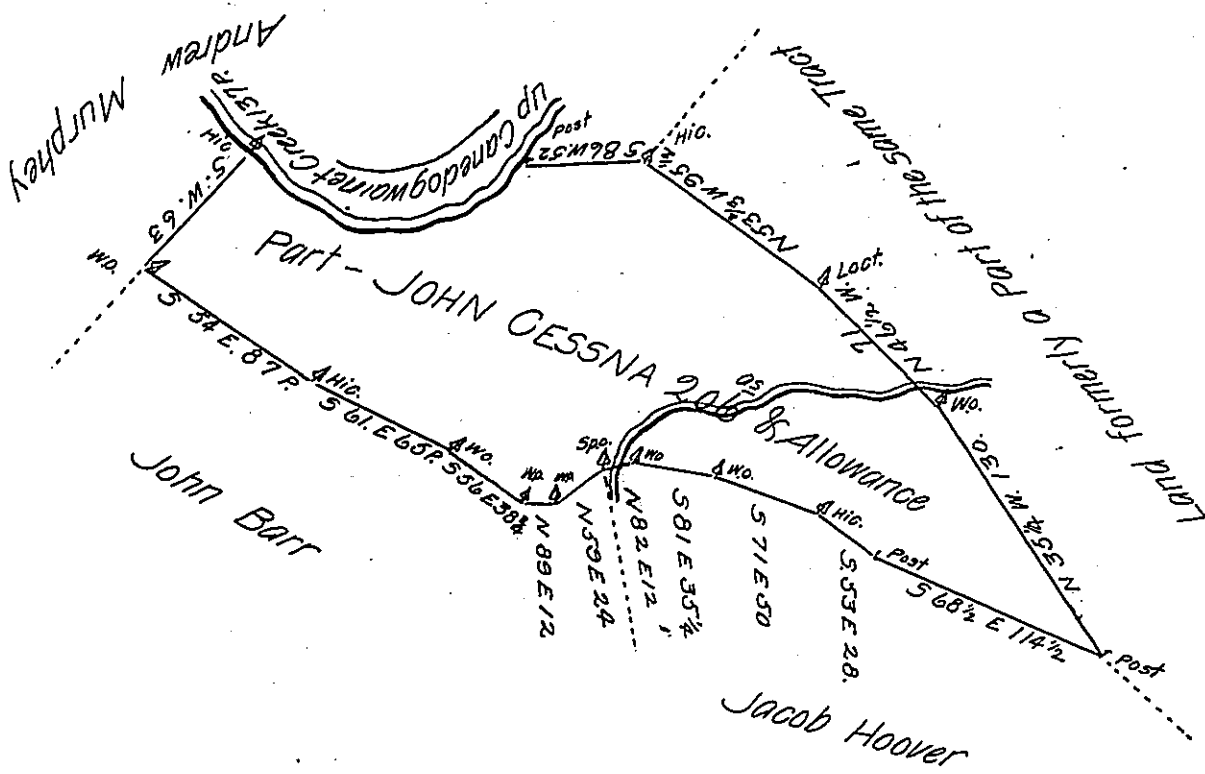


Courses on the Creek

S. 20 W 9
 S 57 W 16
 S. 76 W 42
 N 82 W 23½
 N 47 W 46½
 137 P.



*A Draft of a Tract of Land situate in Southampton Town-
 ship in the County of Franklin Containing two hundred and six
 Acres and the Allowance of six P. Cent. for Roads & C^d. Being a Part of a Tract of
 277 3/4 Acres Surveyed the 23^d September 1788 in pursuance of a Warrant granted
 to John Cessna* (or Sisney) Bearing Date the 16th Day of December 1755 Surveyed
 and laid off from the other Part of said Tract.*

By Matt^r Henderson D.S.

*To Daniel Brodhead Esquire }
 Surveyor General of Pennsylvania }*

** Say John Sisny*

*IN TESTIMONY that the above is a copy of the original remaining on file in
 the Department of Internal Affairs of Pennsylvania, made
 conformably to an Act of Assembly approved the 16th day of
 February, 1833, I have hereunto set my Hand and caused
 the Seal of said Department to be affixed at Harrisburg,
 this fifth day of December 1906.*

Isaac R. Brown
 Secretary of Internal Affairs.